

PERSONAL NAVIGATOR

MONDAY, APRIL 23, 2012

DAY AT SEA

Sunrise: 6:15 a.m. Sunset: 6:43 p.m.
Evening Attire: Cruise Casual

Monday: Partly Cloudy High: 77°F/25°C
Tuesday: Partly Cloudy High: 81°F/27°C

Disney WISHES

On the eve of their graduation, three best friends go on a magical journey down the wishing well. A host of Disney characters help them discover the connection between children who are becoming adults, and adults who stay in touch with being a kid at heart.

Walt Disney Theatre
Decks 3 & 4, Forward
6:15 p.m. & 8:30 p.m.



Assistance available at the entrance to the Walt Disney Theatre 30 minutes prior to show time.




Disney Fantasy Fun Facts

The two huge mosaic walls based on the Disney Pixar animated feature "Finding Nemo" are showcased in Cabanas casual-dining restaurant on Deck 11. Created for the Disney Fantasy by Italian artists, each wall is more than 25 feet wide and more than 8 feet high and contains approximately 194,500 tiles in 200 colors of hand-crafted Venetian enamel. A team of nine artists created the mosaics based on Pixar designs depicting the underwater world of Australia's Great Barrier Reef and characters featured in the motion picture.

Point of Interest

Below is a point of interest and an approximate time that we will be passing during our voyage to St. Maarten today:

11:00 p.m. - Anegada Island - Starboard Side



FAMILY CABARET

Featuring the Comedy & Juggling of Michael Holly, as he entertains the entire family in this fun-filled show.

7:30 p.m., The Tube
Deck 4, Aft

Don't Miss:

\$5,000 Mega Jackpot Bingo

10:45 a.m., D Lounge, Deck 4, Midship

It's big, it's massive, it's supersized. It's \$5,000 MEGA jackpot bingo! Take home \$5,000 if you can cover your card in 46 numbers or less. If not, we carry on to play for the biggest cash prize of the session. Card Pre Sales start at 10:45 a.m. First game starts at 11:00 a.m.

Disney's Behind the Scenes - Behind the Magic

1:00 p.m., Buena Vista Theatre (18+), Decks 4 & 5, Forward

Join Shannon Mashchak, Project Manager, Walt Disney Imagineering, and learn how Imagineers create magical places and experiences for their Guests. The presentation will also give an insight as to what Walt Disney Imagineers are currently working on.

Saludos Amigos Fiesta

10:15 p.m., D Lounge, Deck 4, Midship

Bring the family out to this interactive dance party featuring The Three Amigos. We will party with Donald Duck, learn Salsa, Meringue and have a Latin good time!



Sport's Simulators

Digital sports simulators are available at Goofy's Sports Deck on Deck 13, Aft. This state-of-the-art virtual sports experience includes golf, basketball, baseball, hockey and soccer. Book now at the Port Adventures Desk, Deck 5, Midship.

DINNER MENU

Animator's Palate: Pacific Rim Cuisine
Enchanted Garden: Continental Market Cuisine
Royal Court: French Cuisine

DRINK OF THE DAY

High Tide (Alcoholic)
Passion Cream Freeze
(Non Alcoholic)

IMPORTANT NUMBERS

Fire/Security: 7-3001
Medical Emergency: 7-3000
Health Center: 7-1923

FAMILY ACTIVITY HIGHLIGHTS

DISNEY ANIMATION: ILLUSION OF LIFE - CARTOON PHYSICS

D Lounge, Deck 4, Midship - 9:45 a.m.

Go behind the scenes at Walt Disney Animation Studios and see how flat drawings and pencil lines can come to life through basic techniques such as Stretch and Squash, and create your own "bouncing ball" animation exercise in this entertaining and fun enrichment program.

CHARACTER DANCE PARTY

Lobby Atrium, Deck 3, Midship - 12:15 p.m.

Join some of your favorite Disney Characters in this fun dance party.

JUGGLING WORKSHOP

D Lounge, Deck 4, Midship - 12:30 p.m.

Michael Holly teaches you the basics of juggling in the fun family event.



FAMILY FUSION

D Lounge, Deck 4, Midship - 1:45 & 7:30 p.m.

Bring the entire family and test your Disney knowledge in this high-tech interactive game show, Family Fusion.

CHIP IT GOLF

Lobby Atrium (12+), Deck 3, Midship - 2:15 p.m.,

It's par for the course for our Guests 12 and older to compete on our special "greens" in this fun tournament.

DIAMOND & GEMSTONE SEMINAR

The Tube, Deck 4, Aft - 2:30 p.m.

Join your Shopping Guides Johan & Marissa to learn about exotic Caribbean Gemstones, Tanzanite & Diamonds. Free gemstone pendant for all in attendance! Followed by a raffle to win a Tanzanite Pendant!

DISNEY TUNE TRIVIA

La Piazza, Deck 4, Aft - 3:00 p.m.

Join your Cruise Staff and pianist Charlie Reuter, as they put your Disney Tune knowledge to the test.



ADULT ACTIVITY HIGHLIGHTS

SENSES SPA SEMINARS

Sunrise Stretch - Senses Fitness Center, 7:00 a.m.

Fab Abs - Senses Fitness Center, 7:30 a.m.

Body Sculpt Boot Camp (Fee Applies) - Senses Fitness Center, 9:00 a.m.

Fitness Frenzy (13 - 17yrs) - Senses Fitness Center, 10:00 a.m.

Seminar: Back Pain Solutions - Outlook, 10:15 a.m.

Seminar: Burn Fat Faster - Outlook, 11:00 a.m.

Seminar: Secrets to a Flatter Stomach - Outlook, 1:00 p.m.

Group Cycling - Senses Fitness Center, 4:00 p.m.



TASTING SEMINARS

New World Wine Tasting (21+) - Meridian, 1:30 p.m.

Martini Tasting (21+) - Skyline, 4:00 p.m.

Tequila & Margarita Tasting (21+) - The Tube, 5:00 p.m.

Please make reservations for tastings at Guest Services for a nominal fee.

Tasting Seminars are only for Guest's 21 and Older.

LUNCH

Enchanted Garden, Deck 2, Midship, 12:15 p.m.

GIANT BOARD GAME CHALLENGE

O'Gills Pub, Deck 4, Aft, 3:15 p.m.

MIXER EVENT

O'Gills Pub, Deck 4, Aft, 10:00 p.m.

CLUB
18+*21

ART OF THE THEME SHOW TOUR

Meet at Meridian, Deck 12, Aft - 9:30 a.m. & 3:30 p.m.

A walking tour that highlights the ship's design of Disney culture, theming and artistry.

LIVE MUSIC WITH ROB THOMPSON

Satellite Falls, Deck 13, Forward - 1:45 p.m.

Join Rob Thompson as he plays some relaxing tunes by the falls.



ANYONE CAN COOK

D Lounge, Deck 4, Midship - 2:30 p.m.

From our galley to yours; join our chefs as they show you how to prepare delicious dishes. Today's menu is Sea Bass.

ADULT CABARET: LLOYD MABREY

The Tube, Deck 4, Aft - 10:15 p.m.

Featuring the Music & Comedy of Lloyd Mabrey, as he entertains you in this adult Cabaret-Style show.

\$5,000 MEGA JACKPOT BINGO

D Lounge, Deck 4, Midship

Card Sales - 10:45 a.m. Game Starts - 11:00 a.m.

It's big, it's massive, it's supersized. It's \$5,000 MEGA jackpot bingo! Take home \$5,000 if you can cover your card in 46 numbers or less. If not, we carry on to play for the biggest cash prize of the session.

MEGA RAFFLE JACKPOT BINGO

**D Lounge,
Deck 4, Midship**

Card Sales - 3:30 p.m.

Game Starts - 3:45 p.m.

Join your Cruise Staff for family Bingo fun! Four cash prize games. Plus, great raffle prize packs to be won. Don't miss out on the fun!



MONDAY, APRIL 23, 2012 - DAY AT SEA

BUENA VISTA THEATRE



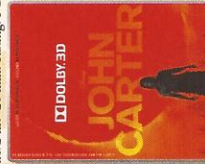
10:00 a.m.
Run Time: 1 hr 40 mins Rating: PG



2:15 p.m.
Run Time: 2 hrs 26 mins Rating: PG-13



5:15 & 8:00 p.m.
Run Time: 2 hrs 07 mins Rating: PG-13



10:30 p.m.
Run Time: 2 hrs 12 mins Rating: PG-13

Character Appearances

- MICKEY MOUSE**
Deck 4, Midship, Balcony - 9:15 & 10:15 a.m.
Lobby Atrium - 5:30, 7:30 & 9:30 p.m.
- PLUTO**
Lobby Atrium - 9:30 & 10:30 a.m.
- GOOFY & MAX**
Deck 4, Midship, Balcony - 9:45 & 10:45 a.m.
- PHINEAS & FERB**
Lobby Atrium - 9:45 & 10:45 a.m.
- DAISY DUCK**
Lobby Atrium - 10:00 & 11:00 a.m.
- LILLO & STITCH**
Deck 4, Midship, Balcony - 11:15 a.m.
Preludes - 5:45 p.m.
- Deck 4, Midship, Balcony - 10:00 p.m.
- JAKE THE NEVERLAND PIRATE**
Deck 4, Midship, Balcony - 1:00 & 2:30 p.m.
- PETER PAN**
Lobby Atrium - 1:15 p.m.
- ALADDIN**
Lobby Atrium - 1:30 p.m.
- CAPT. HOOK & MR SMEE**
Deck 4, Midship, Balcony - 1:30 p.m.
- GENIE**
Deck 4, Midship, Balcony - 2:00 p.m.
- MINNIE MOUSE**
Goofy's Sports Deck - 3:00 p.m.
- CHIP & DALE**
Goofy's Sports Deck - 3:30 p.m.
- DONALD DUCK**
Lobby Atrium - 5:00 & 8:00 p.m.
- BUZZ LIGHTYEAR**
Lobby Atrium - 5:00, 7:30 & 10:00 p.m.
- WOODY & JESSIE**
Lobby Atrium - 5:30, 8:00 & 9:30 p.m.
- REMY**
Lobby Atrium - 5:15, 7:15 & 9:30 p.m.
- EMILE**
Lobby Atrium - 5:45, 7:45 & 10:00 p.m.
- PRINCESS TIANA**
Deck 4, Midship, Balcony - 5:15 p.m.
- BELLE**
Deck 4, Midship, Balcony - 5:45 & 7:45 p.m.
- CINDERELLA**
Deck 4, Midship, Balcony - 7:15 p.m.
- LILLO**
Preludes - 7:30 p.m.
- STITCH**
Preludes - 8:00 p.m.
- PINOCCHIO**
Deck 4, Midship, Balcony - 9:30 p.m.
- GENIE**
Deck 4, Midship, Balcony - 2:00 p.m.
- MINNIE MOUSE**
Goofy's Sports Deck - 3:00 p.m.

For details of daily Disney character appearances, refer to the character line on your Navigator Grid, or the digital character board in the Lobby Atrium.

YOUTH ACTIVITIES THEMED EXPERIENCES

- CLUBHOUSE SERIES**
focuses on movement and features content which appeals to younger children.
- STORYBOOK SERIES**
is designed with a strong connection to the Disney classic stories.
- JUMP UPI SERIES**
includes large ground games & movement-oriented activities.
- CREATE & INVENT SERIES**
will have a tactile focus allowing children to create and admire their work.
- IN THE SPOTLIGHT SERIES**
focuses on children's stage presence with lots of activities and enthusiasm.
- SOLVE IT! SERIES**
are less active, but will challenge children with problem/solutions-based activities.
- OUT & ABOUT SERIES**
Set outside secured Youth Activities spaces, very active, appealing to tweens. Recommended 8 - 14 years

SHIP DIRECTORY

YOUTH ACTIVITIES

DISNEY'S OCEANER CLUB	9:00 A.M. - 11:00 P.M.
DISNEY'S OCEANER LAB	9:00 A.M. - 12:00 P.M.
EDGE	10:00 A.M. - 1:00 A.M.
IT'S A SMALL WORLD NURSERY	9:00 A.M. - 11:00 P.M.
VIBE ENTRANCE	10:00 A.M. - 2:00 A.M.
RECREATION	
AQUADUCK	9:00 A.M. - 10:00 P.M.
AQUALAB	9:00 A.M. - 7:00 P.M.
DONALD'S POOL	6:00 A.M. - 11:00 P.M.
GOOFY GOLF	8:00 A.M. - 10:00 P.M.
GOLF/SPORTS SIMULATORS	9:00 A.M. - 6:00 P.M.
GOOFY'S SPORTS DECK	8:00 A.M. - 6:00 P.M.
MICKEY POOL	6:00 A.M. - 11:00 P.M.
MICKEY SLIDE	9:00 A.M. - 6:00 P.M.
MIDSHIP DETECTIVE AGENCY	9:00 A.M. - 9:00 P.M.
NEMO'S REEF	9:00 A.M. - 7:00 P.M.
PORT ADVENTURES DESK	7:00 P.M. - 8:30 P.M.
QUIET COVE POOL	6:00 A.M. - 12:00 MID
SATELLITE FALLS	6:00 A.M. - 6:30 P.M.
SENSES FITNESS CENTER	6:30 A.M. - 10:00 P.M.
GENERAL INFORMATION	
ARR-CADE	24 HOURS
DISNEY VACATION CLUB	10:30 A.M. - 12:30 P.M. 2:30 P.M. - 10:00 P.M.
GUEST SERVICES	24 HOURS
FUTURE CRUISE SALES DESK	9:00 A.M. - 12:00 P.M. 3:00 P.M. - 6:00 P.M. 7:30 P.M. - 8:30 P.M.
MEDICAL HEALTH CENTER	9:30 A.M. - 11:00 A.M. 4:30 P.M. - 7:00 P.M.
PRELUDES	5:45 P.M. - 6:30 P.M. 8:00 P.M. - 8:45 P.M.
PORT & SHOPPING DESK	10:00 A.M. - 12:00 P.M. 7:30 P.M. - 8:30 P.M.
SENSES SPA AND SALON	8:00 A.M. - 10:00 P.M.
SHUTTERS PHOTO GALLERY	10:00 A.M. - 11:00 P.M.
SHUTTERS DIGITAL	24 HOURS
SHOPPING	
BIBBIDI BOBBIDI BOUTIQUE	9:00 A.M. - 9:00 P.M.
MICKEY'S MAINSAIL	9:00 A.M. - 11:00 P.M.
QUACKS	10:00 A.M. - 4:00 P.M.
SEA TREASURES	9:00 A.M. - 11:00 P.M.
VISTA GALLERY	10:00 A.M. - 10:00 P.M.
WHITECAPS	9:00 A.M. - 11:00 P.M.
WHOZITS & WHATZITS	10:00 A.M. - 4:00 P.M.

DINNER MENU
Animator's Palate: Pacific Rim
Enchanted Garden: Continental Market
Royal Court: French Dinner
Dining Times: 5:45 & 8:15 p.m.

DRINK OF THE DAY
High Tide (Alcoholic)
Bison Cream Freeze (Non Alcoholic)

WEATHER FORECAST
Monday: Partly Cloudy
High: 77°F/25°C
Tuesday: Partly Cloudy
High: 81°F/27°C

Evening Attire: Cruise Casual

DINING & LOUNGES

BREAKFAST	
CABANAS CONTINENTAL	7:00 A.M. - 7:30 A.M.
CABANAS	7:30 A.M. - 10:45 A.M.
ENCHANTED GARDEN	9:00 A.M. - 10:45 A.M.
ROYAL COURT	8:00 A.M. - 9:30 A.M.
LUNCH	
CABANAS	12:00 P.M. - 2:00 P.M.
ENCHANTED GARDEN	12:00 P.M. - 1:30 P.M.
FILLMORE'S FAVORITES	11:00 A.M. - 6:00 P.M.
LUIGI'S PIZZA	11:00 A.M. - 6:00 P.M.
ROYAL COURT	12:00 P.M. - 1:30 P.M.
TOW MATER'S GRILL	11:00 A.M. - 11:00 P.M.
DINNER	
ANIMATOR'S PALATE	5:45 P.M. & 8:15 P.M.
ENCHANTED GARDEN	5:45 P.M. & 8:15 P.M.
ROYAL COURT	5:45 P.M. & 8:15 P.M.
CABANAS TABLE SERVICE	6:30 P.M. - 8:30 P.M.
LATE NIGHT SNACKS	
LA PIAZZA (18+)	10:45 P.M. - 11:45 P.M.
LUIGI'S PIZZA	9:30 P.M. - 12:30 A.M.
ADDED FEATURES	
BEVERAGE STATION	DECK 11, MID 24 HOURS
EYE SCREAM	DECK 11, MID 11:00 A.M. - 11:00 P.M.
ROOM SERVICE	DIAL O 24 HOURS
ENTERTAINMENT - LOUNGES - BARS	
Adults must be 21 and older to consume alcoholic beverages.	
BON VOYAGE	DECK 3, MID 10:30 A.M. - 11:00 P.M.
COVE BAR (18+)	DECK 11, FWD 10:00 A.M. - 10:30 P.M.
COVE CAFE (18+)	DECK 11, FWD 7:00 A.M. - 12:00 MID.
CURRENTS (18+)	DECK 13, FWD 10:00 A.M. - 11:00 P.M.
D LOUNGE	DECK 4, MID SHOW TIMES
FROZONE	DECK 11, MID 11:00 A.M. - 11:00 P.M.
LA PIAZZA	DECK 4, AFT 12:30 P.M. - 12:00 MID.
MERIDIAN (18+)	DECK 12, AFT 5:00 P.M. - 12:00 MID.
O GILLS PUB	DECK 4, AFT 12:00 P.M. - 12:00 MID.
OOH LA LA (18+)	DECK 4, AFT 5:00 P.M. - 12:00 MID.
OUTLOOK	DECK 14, MID 5:00 P.M. - 12:00 MID.
SKYLINE (18+)	DECK 4, AFT 10:00 P.M. - 2:00 A.M.
THE TUBE (18+)	DECK 4, MID 7:30 A.M. - 10:00 P.M.
VISTA CAFE	DECK 12, AFT 10:30 A.M. - 6:30 P.M.
WAVES	DECK 12, AFT 10:30 A.M. - 6:30 P.M.

Consumers who order raw or partially cooked, ready-to-eat food of animal origin, are hereby informed that the food is not sufficiently cooked to ensure its safety.

GOOFY'S SPORTS
Digital Simulators

Sports Simulator
(Basketball, Baseball, Hockey, or Soccer) \$25 / half hr, \$45 / hr
\$12 / half hr, \$20 / hr

Golf Simulator

Reservations can be made at the Port Adventures Desk, Deck 5, Midship or at the Simulators, Deck 13, Aft

IMPORTANT NUMBERS
Fire/Security: 7-3001
Medical/Emergency: 7-3000
Health Center: 7-1923

YOUTH ACTIVITIES HIGHLIGHTS

DINE & PLAY

A convenience for families dining at 8:15 p.m., our Youth Activities Counselors will be available at 9:15 p.m. at the entrance of Royal Court, Enchanted Garden and Animator's Palate dining rooms to bring registered children to join the fun in the Youth Activity areas.

CLUBHOUSE KIDS

Is a structured play time offered during secured programming, and is recommended for children ages 3-7. During Clubhouse Kids time in the Oceaneer Club, Counselors will be able to interact and encourage the youngest cruisers in specific activities, ensuring they are engaged.



Deck 5 Midship (7-1440) 9:00 a.m. - 11:00 p.m.
(3 - 12 years old)

ALOHA LUAU

9:30 a.m.

Get your hula on and bring junior cruisers to the Oceaneer's Club to kick off their cruise Hawaiian Style with Lilo and Stitch and some of their best friends!

ONCE UPON A TIME

4:00 p.m.

Join Beverly the Bookmaker for a magical, musical story time with a Disney Princess!



Deck 5 Midship (7-1445) 9:00 a.m. - 12:00 Mid.
(3 - 12 years old)

SUPER SLOPPY SCIENCE - EGGSPERIEMENTS

9:30 a.m.

Join Professor Make-O-Mess in some of the most extreme experiments you will ever see in the world of Super Sloppy Science!

GET THE HOOK

9:30 p.m.

A villainous villain has stolen Captain Hook's prized golden hook. Become a member of the Top Detective Agency and help solve the clue's to retrieve Hook's hook.



Deck 13 Midship (41-14426) 10:00 a.m. - 1:00 a.m.
(11 - 14 years old)

ANYONE CAN COOK - PIZZA

2:30 p.m.

Anyone can cook as we work together to create some of our favorite treats. From our galley to yours; join our Chef as they show you how to create pizza!

THAT'S HILARIOUS

9:00 p.m.

A game of quick wit and improvisation where you become the star of the show. Work with your fellow cruisers to perform sketches and applaud loudly as you each have the chance to perform to a live audience.



Entrance on Deck 4 Forward (7-9418)
10:00 a.m. - 2:00 a.m.
(14 - 17 years old)

DISNEY ANIMATION: THE ILLUSION OF LIFE: - CREATING A CHARACTER

3:00 p.m.

Go behind the scenes at Walt Disney Animation Studios as Walt Disney himself talks about his most famous characters, then learn the basic techniques of drawing Mickey and Donald in this fun and interesting enrichment program.

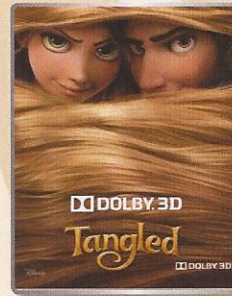
ESPN DREAM TEAM DRAFT DAY

7:15 p.m.

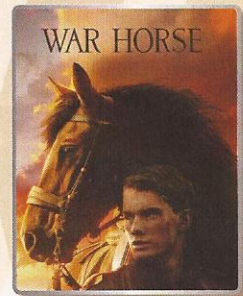
Play ball! Join the "Commissioner" and engage in this interactive fantasy baseball draft unlike anything you've ever seen! Can YOU draft the greatest baseball team of All-Time?

BUENA VISTA THEATRE

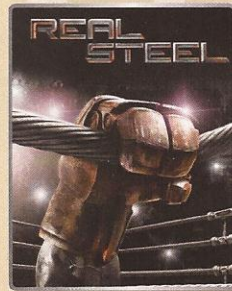
Today's Movies



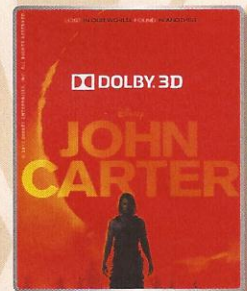
10:00 a.m.
Run Time: 1 hr 40 mins
Rating: PG



2:15 p.m.
Run Time: 2 hrs 26 mins
Rating: PG-13



5:15 & 8:00 p.m.
Run Time: 2 hrs 07 mins
Rating: PG-13



10:30 p.m.
Run Time: 2 hrs 12 mins
Rating: PG-13



Don't change that channel! Its time for the Disney Channel Afternoon Pool Party! Your cruise staff will host an exciting deck party full of games, and contests all in between your favorite Disney Channel shows! So sit back, relax and enjoy the sun!

**Deck Stage,
Deck 11, Midship
12:30 p.m.**



Bring the family out to this interactive dance party featuring The Three Amigos. We will party with Donald Duck, learn Salsa, Meringue and have a Latin good time!

**D Lounge,
Deck 4, Midship
10:15 p.m.**

YOUTH ACTIVITIES OPEN HOUSE

Open House is an opportunity for all to come and participate in a variety of exciting activities and free time in the Oceaneer Club, Lab, Edge and Vibe throughout the cruise. During these times secured programming will still be offered in the other venue for those looking to check their children into care.

MORE TO ENJOY WHILE ONBOARD

ONBOARD AIRLINE CHECK IN

If you would like to have your boarding passes printed for you onboard and have your luggage taken to the airport for you, register by midnight of St. Thomas. If you have Disney Cruise Line airport transfer to Orlando International Airport and fly with one of the participating airlines. Please stop at Guest Services, Deck 3, Midship.



DISNEY VACATION CLUB® GROUP PREVIEW

Want to learn more about taking magical vacations year after year? Please see a Disney Vacation Club representative on Deck 4, Mid-Ship, or call 7-2805 from your stateroom phone for more information about our interactive group presentation.



DIAMOND & GEMSTONE SEMINAR

Join your Shopping Guides Johan & Marissa to learn about exotic Caribbean Gemstones, Tanzanite & Diamonds. Free gemstone pendant for all in attendance! Followed by a raffle to win a Tanzanite Pendant! 2:30 p.m., The Tube, Deck 4, Aft.

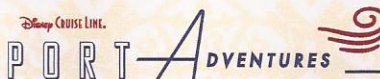
SURF @ SEA

\$0.75 per minute, or save money by buying blocks of time. \$55.00 for 100 minutes, \$100.00 for 250 minutes and \$150.00 for 500 minutes. Wireless information sheets are available at Guest Services, Deck 3, Midship.

Please note: Due to satellite connectivity, onboard internet service will be noticeably slower than you may be accustomed to and may at times be interrupted or unavailable.

ON DEMAND TV

Watch Disney movies, Hollywood features, ABC Shows, and even captioned content, plus much more "On Demand" for **FREE** in the comfort of your stateroom! Bookmark your movie and come back to watch it later. Press MENU on your stateroom television remote control, and follow the prompts.



Tomorrow the two nation island of St. Maarten / St. Martin awaits us. Your knowledgeable Port Adventures team is standing by to answer all your questions about the best choices for you and your family. Enjoy the beautiful and magnificent Orient Bay Beach or take a rip roaring ride on a RIB boat past the airport to the French side for some snorkeling. Visit the Port Adventures Desk, Deck 5, Midship, for more information.

SHOPPING

SHOPIA FIORI FREE GIFT

Have you seen the million dollar necklace in Whitecaps yet? Say the word "ELIZABETH" and receive a free crystal pendant gift, compliment of the Shophia Fiori \$3 million dollar trunk show. Available in Whitecaps, Deck 3, Forward.

BIBBIDI BOBBIDI BOUTIQUE

The boutique for a Princess - exclusive costumes for the Disney Fantasy are available here. Don't forget to ask about the Under the Sea package. Deck 5, Midship.

FANTASY INAUGURAL MERCHANDISE

Bring home a memory of the Disney Fantasy's Inaugural sailings. Choose from tees, hats, sweatshirts, mugs and scrapbooks. Available at Sea Treasures, Deck 3, Forward.

MICHELLE WATCHES

Visit Whitecaps to view our Michelle Watch collection. Swiss made watches with intricate details. Purchase face and bands separately to personalize the look.

DISNEY CRUISE LINE EXCLUSIVE BOXED JEWELRY

Today only, starting from \$29 the perfect gift for friends and family at home! Available in Whitecaps, Deck 3, Forward.

DOONEY & BOURKE

Visit Whitecaps for our exclusive Disney Cruise Line Dooney & Bourke Collection. Now with 25% off on selected lines. You can find handbags, wallets and wristlets. Available in Whitecaps, Deck 3, Forward.

MAIDEN VOYAGE SPECIAL VALUE

Stop at Sea Treasures to find out our specials on Maiden voyage merchandise.

SENSES SPA & SALON

SPA TOPIA SPECIAL

Full body exfoliation. Hotstone back massage on the back neck and shoulders, booster facial and foot and ankle massage

75 mins. \$135

4:00 p.m. to 9:00 p.m. ONLY

SILENT ART AUCTION

Your chance to take part in our Silent Art Auction today. Vista Gallery, Deck 4, Midship.

Preview
10:00 a.m. - 12:00 p.m.

Auction
1:00 - 4:00 p.m.

Shutters SEE YOUR PHOTOS!

All your formal portraits taken last night are ready for purchase. Avoid the rush on the last night of the cruise and order your stateroom photos for one low price on a CD for only \$349.95 CD includes the artwork and for \$50 more you can buy the printed copy as well! Terms and conditions apply.

**Please note that photos are available for viewing on our interactive photo kiosks approximately three hours after being taken and are only available for purchase during this cruise.*

DF 003 4-23-2012 ©DISNEY

Due to port regulations, when the ship is docked, the stores will remain closed.

IMPORTANT INFORMATION

Security Notice

All Guests (including children) who wish to disembark the ship are required to present their Key to the World card at the gangway. A photo ID is also required for those Guests who are 18 years of age or older. Guests under the age of 18 are required to have a Parent, Guardian or other responsible adult sign an authorization form at the time it is given out if they wish to go ashore unaccompanied. Authorization forms are available at the gangways and Guest Services.

Please Note:

Please remember to use plenty of sunscreen & mosquito/ Insect repellent when venturing ashore.

Cold and Flu Reminder

Please wash hands frequently and thoroughly, particularly before meals. Contact the Health Center by dialing 7-1923, should anyone in your party become ill.

Corridor Quiet Hours

As a courtesy to all our Guests, please recognize quiet hallway hours from 10:00 p.m. til 8:00 a.m.

Inclement Weather

For the safety of all Guests, outdoor events may be changed due to unforeseen weather conditions.

Environmental Message

With Disney's commitment to the Environment, please refrain from throwing anything over the Ship's side. Thank you!

No Reserved Seats Policy

As a courtesy to all our Guests, we kindly advise that the saving of seats is not permitted in the Walt Disney Theatre, and the saving of the sun loungers is not permitted on Deck 11, 12, and 13. Items left unattended will be returned to lost and found at Guest Services, Deck 3 Midship.

Smoking

For the comfort of our guests the following areas are designated as Smoking areas: - Promenade Deck (Deck 4), smoking is permitted Port Side, Aft only from 6:00 p.m. to 6:00 a.m.
- Currents - Deck 13, Forward, Port Side.
- Meridian Bar - Deck 12, Aft, Port Side, outside.
-Smoking is permitted on stateroom verandahs. Smoking is prohibited inside all guest staterooms. Guests found smoking in their staterooms will be charged a \$250 stateroom recovery fee.

Walt Disney Theatre

Theatrical performances may use artificial fog, strobe lights, pyrotechnics and other special effects. For the safety of our performers and the comfort of those around you, the use of any photography, video recording device or any electronic equipment is prohibited.

Verandah Safety

Please do not leave any combustible materials on your balcony when not present in your stateroom for safety reasons.

DF/BD/E/003/4.21.12/RD/©DISNEY